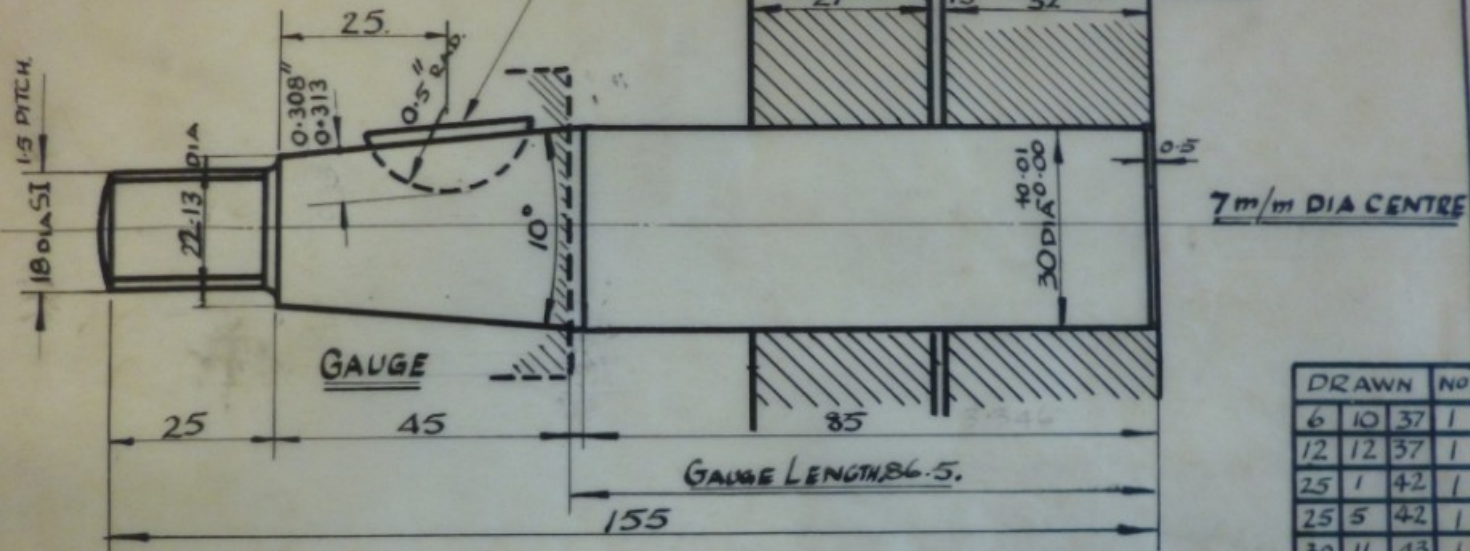


WOODRUFF KEY N° B.S.150

BB 30 BEARING

FLYWHEEL SHRINK.



0.250"  
0.249"

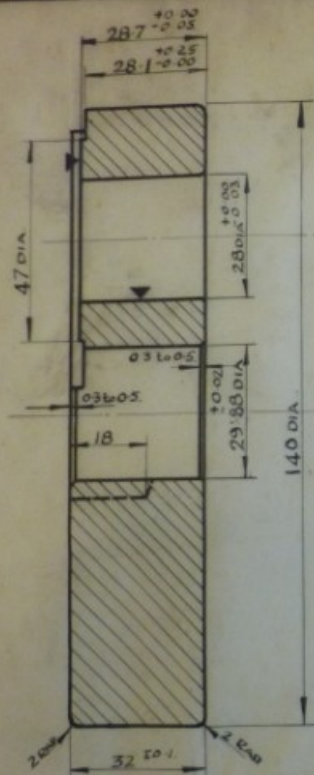


DRAWN	NO		
6	10	37	1
12	12	37	1
25	1	42	1
25	5	42	1
30	11	43	1
30	10	45	1

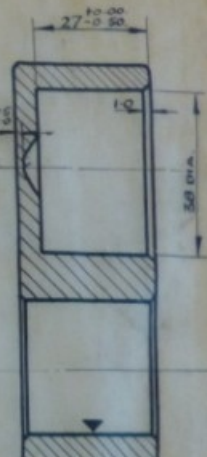
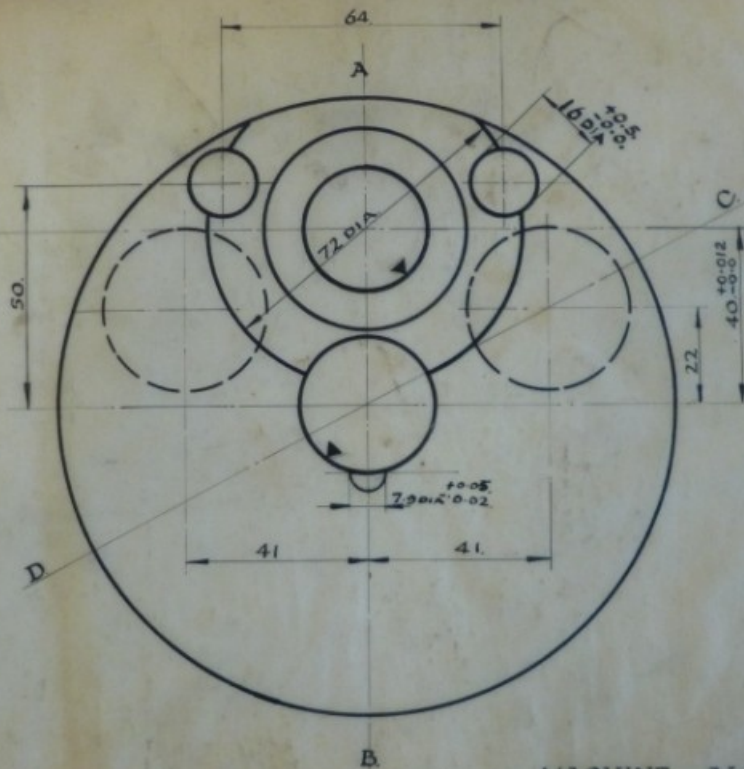
MODIFIED 29/6/48  
MODIFIED 8/10/47

FRONT CRANKSHAFT.				TYPE	Q50
				No	1
MATERIAL		SCALE	DRWN AC	2.11.32	
En 36.	1/1.	TRCD	DB	253.47.	
		APP			
				10011.	
GEO MONRO LTD WALTHAM CROSS.					

22 APR 1947



SECTION AB



SECTION C D

DRWN	NO
25	1 38 1
8	6 41 1
13	1 38 1
10	11 41 1
8	9 42 1
8	5 43 1
25	10 43 1
26	10 43 1
30	10 40 1

MACHINE ALLOWER.  
GRIND AT ▼

**FRONT FLYWHEEL.**

MATERIAL	SCALE	DRWN	T/C D	APP	DATE	TYPE	
						NO	
EN 10	1/1	7/11	4-12-38			CS2	
			1-4-47			1	
GEO. MONRO LTD						10289	
WALTHAM CROSS.							